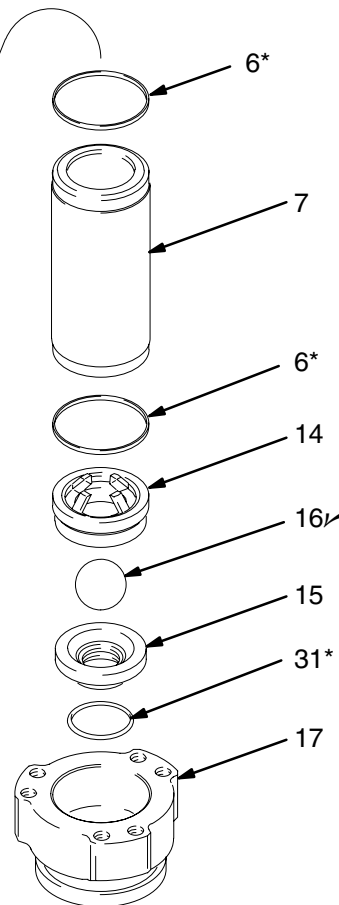
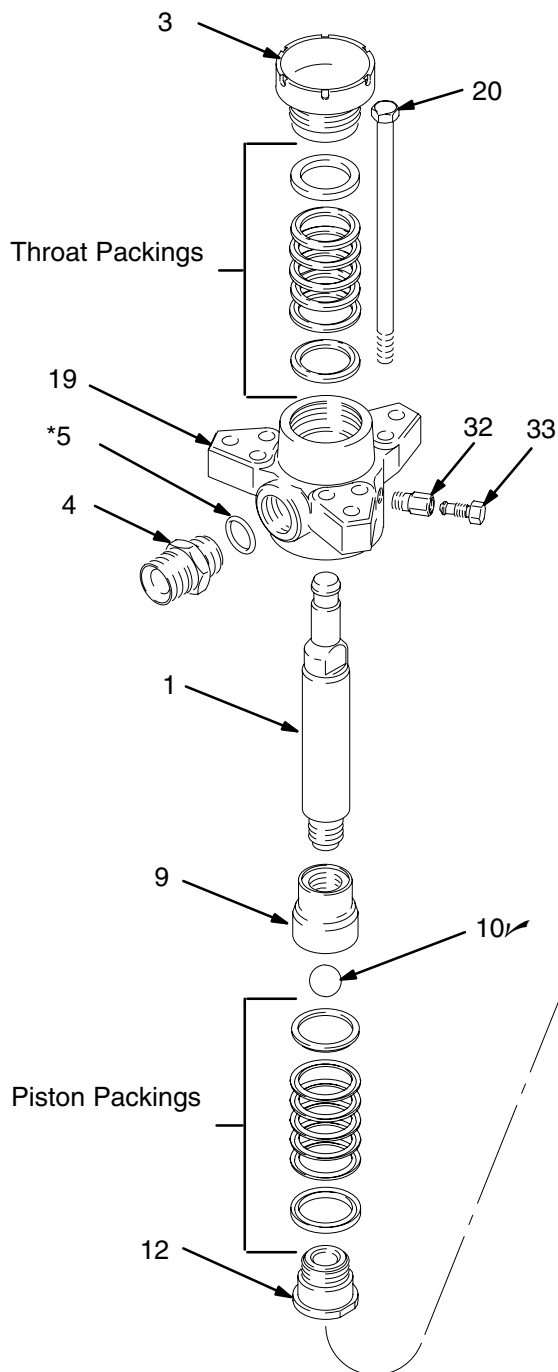


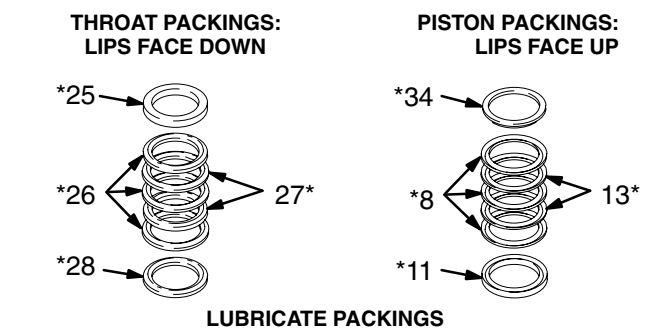
* These parts are included in Packing Repair Kit 222879, which may be purchased separately for standard Displacement Pump 222801.

✓ Keep these spare parts on hand to reduce down time.

Ref No.	Part No.	Description	Qty
1	184002	ROD, displacement; stainless steel	1
3	184006	PACKING NUT/WET-CUP; carbon steel	1
4	184279	FITTING, outlet; 1-1/2 in. npt(m) x M42 x 20	1
5*	109213	O-RING; PTFE	1
6*	184072	SEAL; Delrin®	2
7	184003	CYLINDER; stainless steel	1
9	184297	GUIDE, ball, piston; stainless steel	1
10✓	108001	BALL, piston; stainless steel; 1.5 in. (38.1 mm) dia.	1
12	222802	HOUSING, seat, piston valve; stainless steel w/tungsten carbide seat	1
14	184406	GUIDE, ball, intake; ductile iron	1
15	222794	HOUSING, seat, intake valve; ductile iron w/tungsten carbide seat	1
16✓	102974	BALL, intake; stainless steel; 2 in. (50.8 mm) dia.	1
17	184275	HOUSING, intake; ductile iron	1
19	222922	HOUSING, outlet; nickel-plated ductile iron	1
20	109203	SCREW, cap, hex hd; 5/8-11 unc-2A x 12 in. (305 mm)	6
31*	102857	O-RING; PTFE	1
32	165702	HOUSING, valve	1
33	190128	PLUG, valve	1



Displacement Pump 222801, Series A **(PTFE and Leather Packings)**



Ref No.	Part No.	Description	Qty
8*	109316	V-PACKING; piston; PTFE	3
11*	184186	GLAND, female; piston; stainless steel	1
13*	184316	V-PACKING; piston; leather	2
25*	184185	GLAND, female; throat; stainless steel	1
26*	109315	V-PACKING; throat; PTFE	3
27*	184315	V-PACKING; throat; leather	2
28*	184235	GLAND, male; throat; stainless steel	1
34*	184236	GLAND, male; piston; stainless steel	1

* These parts are included in Packing Repair Kit 222879, which may be purchased separately.